



BURNER AND TEST APPARATUS ADJUSTMENT AND DIMENSIONING TOOLS

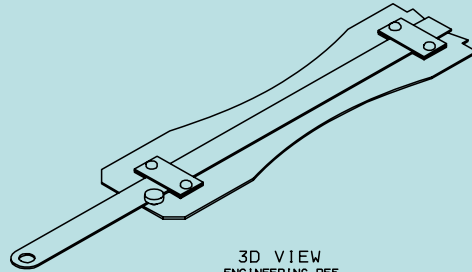
**DRAWINGS OF THE TOOLS DEVELOPED AND
FABRICATED AT THE FIRE AND HAZARDOUS TEST
FACILITY**

**BOEING COMMERCIAL AIRPLANES
AERO / NOISE / PROPULSION LABORATORY
SEATTLE, WASHINGTON**

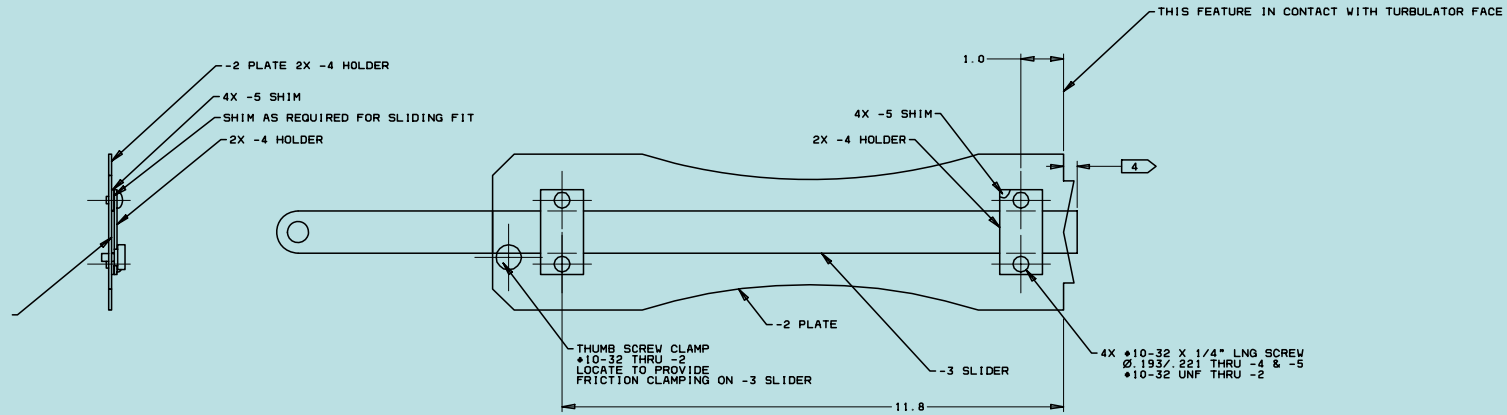


NOTES UNLESS OTHERWISE NOTED

- 1 TOLERANCES
 .X = ±.05
 .XX = ±.03
 .XXX = ±.01
 .XXXX OR FRACTION = ±.01
2. GROUND TEST ONLY
3. THIS TOOL HAS THREE USES:
 1) SET THE DEPTH OF THE FUEL NOZZLE
 2) SET THE DEPTH OF THE STATOR
 3) SET THE EXTENSION LENGTH OF THE BURNER CONE EXIT PLANE
 ALL DEPTHS AND LENGTHS ARE MEASURED RELATIVE TO THE TURBULATOR FACE
- 4 GAGE DIMENSION
 VERIFY THAT GAGE DIMENSION IS .3125 (5/16) ±.01 WHEN THE INDEX IS ALLIGNED WITH "FUEL NOZZLE"
 VERIFY THAT GAGE DIMENSION IS 4.0625 (4 1/16) ±.01 WHEN THE INDEX IS ALLIGNED WITH "STATOR"
 TRIM AS REQUIRED TO ACHIEVE TOLERANCE.
- 5 USE THIS LINE TO COMPARE TO STRAIGHT EDGE LAID ACROSS BURNER CONE FACE (BURNER CONE EXIT PLANE)



3D VIEW
 ENGINEERING REF
 SCALE: NONE



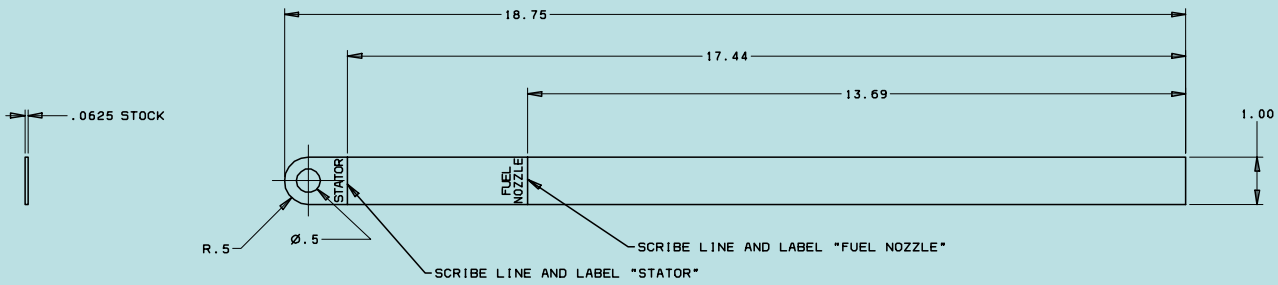
-1 ASSY

**INSULATION BLANKET BURNER
 ADJUSTMENT TOOLS
 CONE / NOZZLE / STATOR
 DIMENSION TOOL**

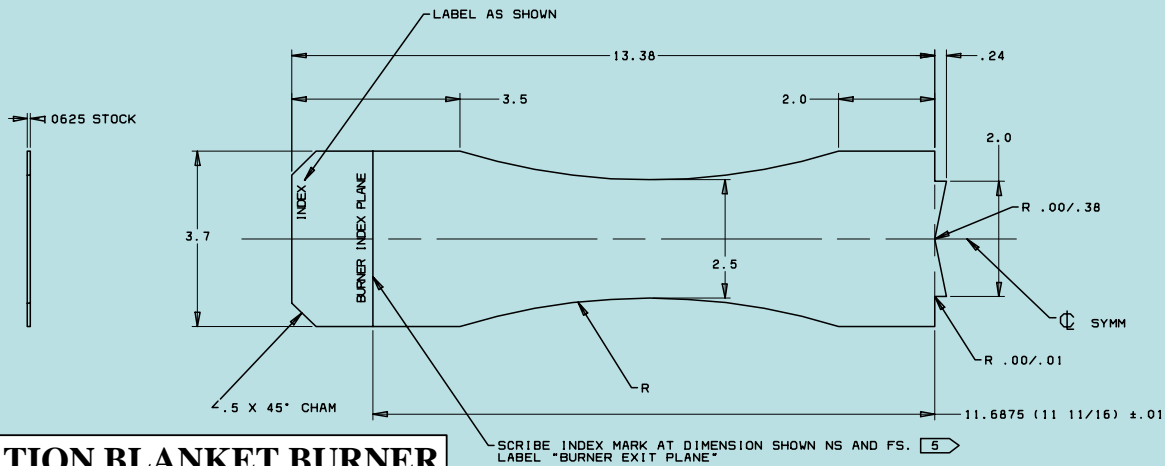
Sheet 1 of 2
 scale: none

REV	BY	CHKD	DATE	DESCRIPTION	ZONE	MATERIAL AND SPECIFICATION	HT	TR	FINISH	PT	PK	QTY
1				THUMB SCREW		#10-32 THREAD STEEL OR BRASS						-
4				SCREW		#10-32 X 1/4" SCREEN STEEL						-
4	-5			SHIM		.0625 X .5 X 1.0 SHEET ANY ALUMINUM						-
2	-4			HOLDER		.0625 X 1.0 X 2.0 SHEET ANY ALUMINUM						-
1	-3			SLIDER		.0625 THICK SHEET ANY ALUMINUM						-
1	-2			PLATE		.125 THICK SHEET ANY ALUMINUM						-
-	-1			DEPTH TOOL								-
PARTS LIST												





-3 SLIDER



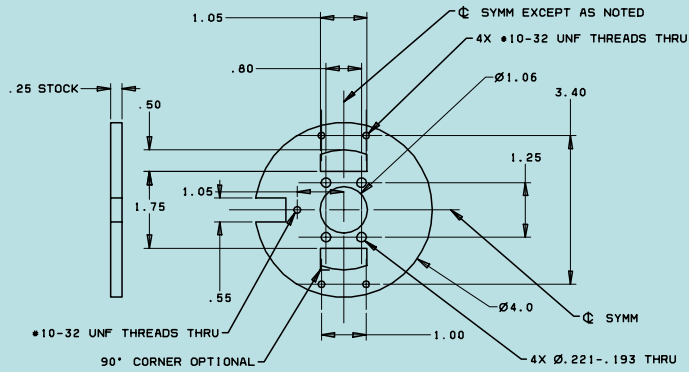
-2 PLATE

-3 SLIDER

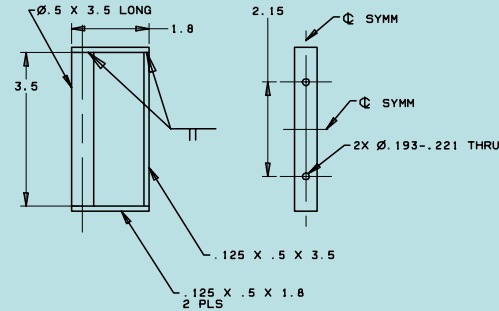
**INSULATION BLANKET BURNER
ADJUSTMENT TOOLS
CONE / NOZZLE / STATOR
DIMENSION TOOL**

Sheet 2 of 2
scale: none



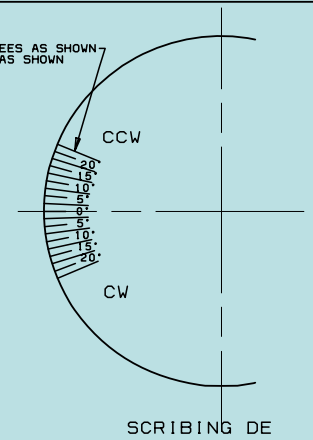


-4 PLATE

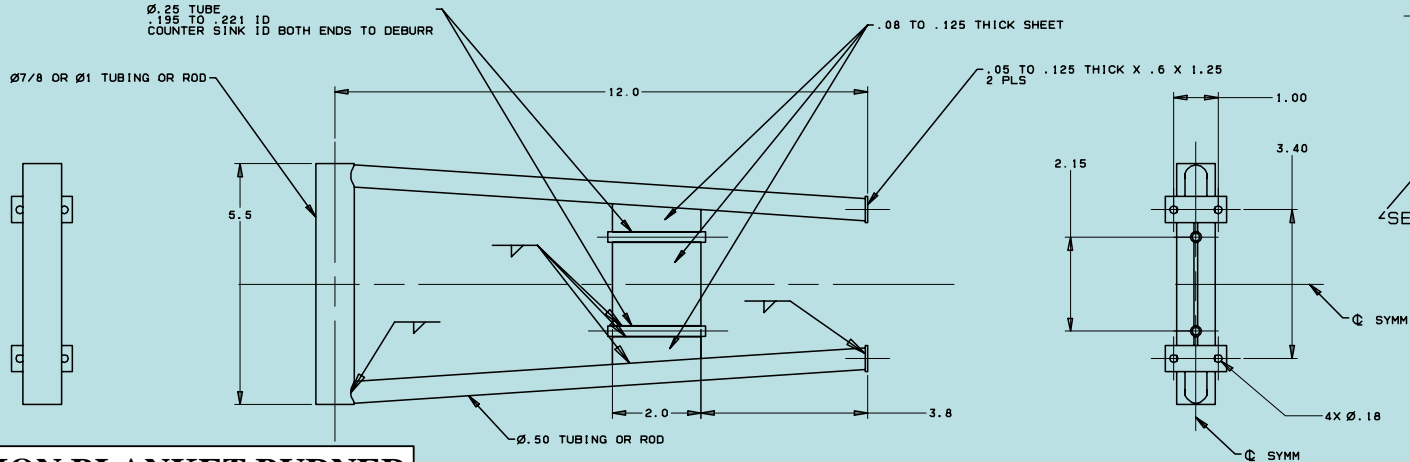


-3 HANDLE

SCRIBE -4 EVERY 2.5 DEGREES AS SHOWN - LABEL ANGLES. CCW. & CW AS SHOWN



SOCK



-2 HOUSING

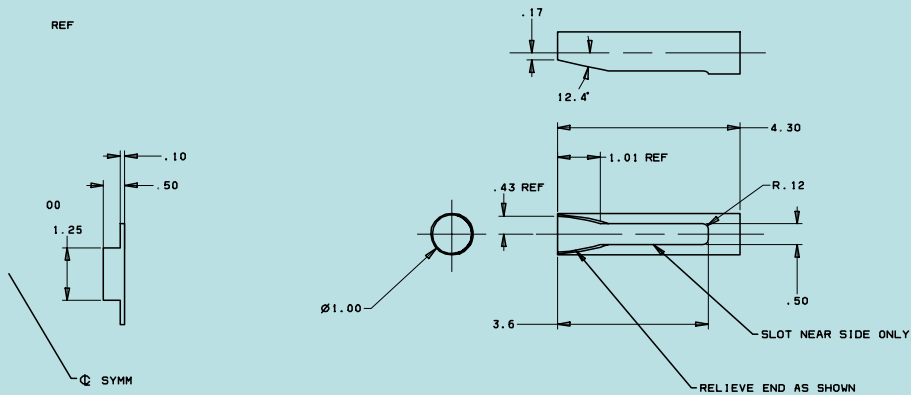
MATERIAL: STAINLESS STEEL
OPTION: CHANGE DESIGN TO MAKE FROM 1/2" THICK AL PLATE
SEE -1 TO VERIFY FIT UP OF ADJACENT PARTS

SEE SCRIBING

**INSULATION BLANKET BURNER
ADJUSTMENT TOOLS
TURBULATOR CLOCKING AND
POSITIONING TOOL**

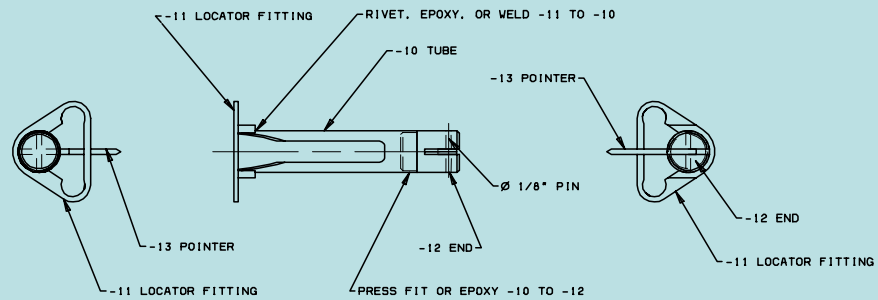
Sheet 2 of 4
scale: none



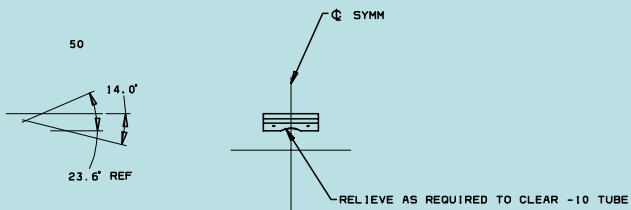


R FITTING

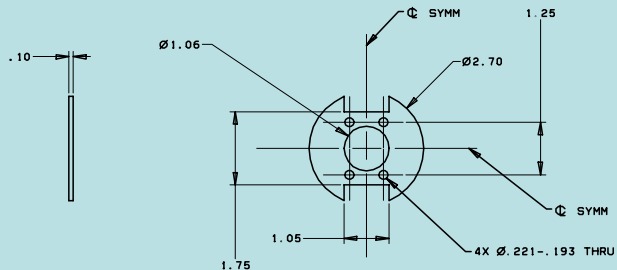
-10 TUBE



-9 POINTER ASSY



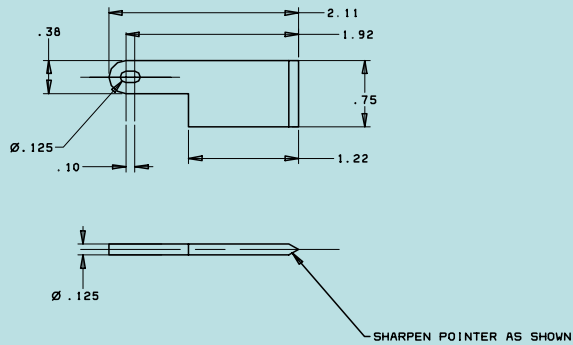
-6 ANGLE BLOCK



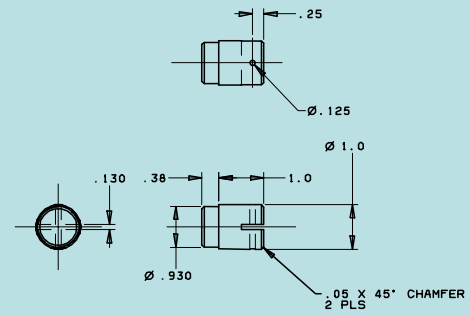
-5 ROUND SHEET

**INSULATION BLANKET BURNER
ADJUSTMENT TOOLS**
TURBULATOR CLOCKING AND
POSITIONING TOOL
Sheet 3 of 4
scale: none

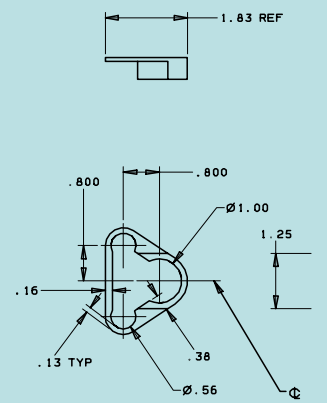




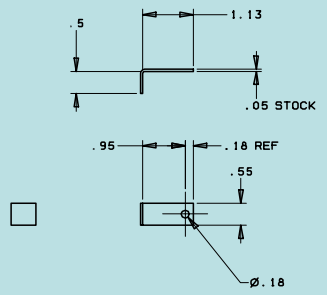
-13 POINTER



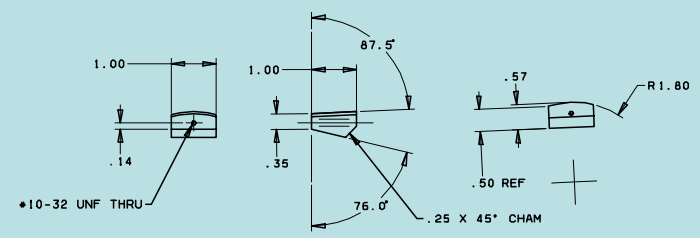
-12 END



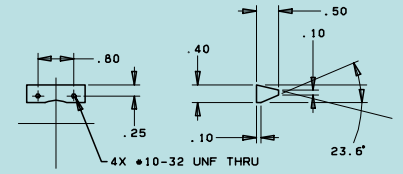
-11 LOCATOR F



-8 INDEX ANGLE



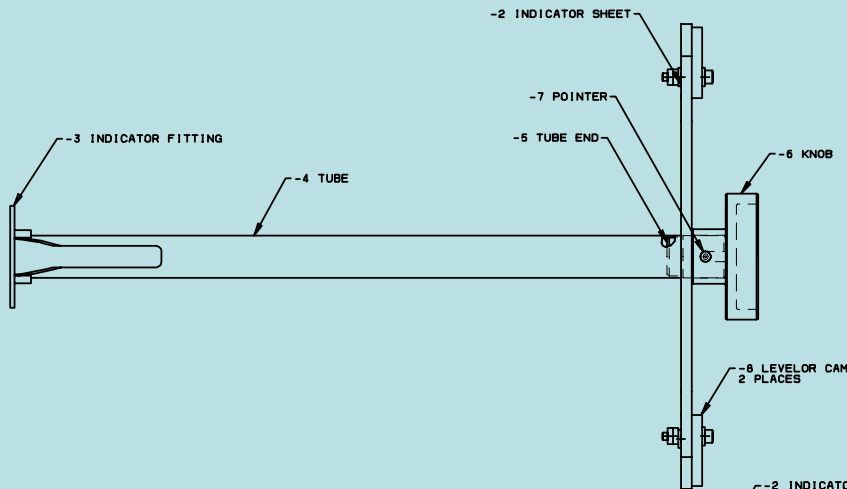
-7 GRIPPER BLOCK



-6

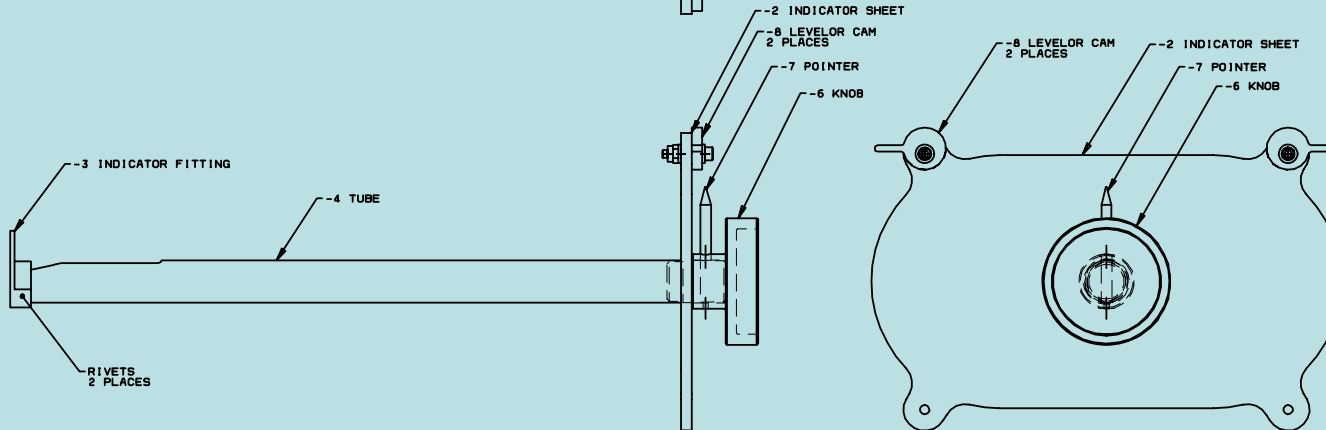
**INSULATION BLANKET BURNER
ADJUSTMENT TOOLS
TURBULATOR CLOCKING AND
POSITIONING TOOL**
Sheet 4 of 4
scale: none





NOTES: UNLESS OTHERWISE SPECIFIED.

1. THIS HARDWARE IS FOR GROUND TEST USE ONLY.
2. BREAK SHARP EDGES. CHAMFER OR RADIUS APPROX. 0.01.
3. DIMENSIONS AND SURFACE TEXTURE DESIGNATIONS APPLY BEFORE PLATING OR FINISH COATING UNLESS OTHERWISE NOTED.



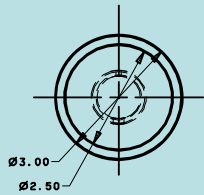
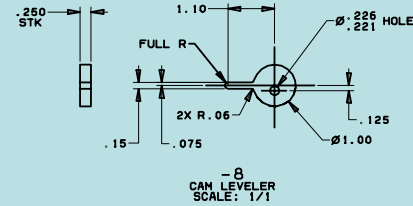
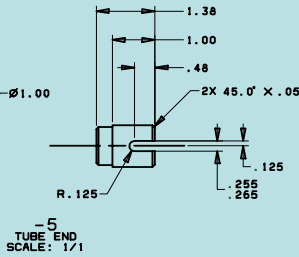
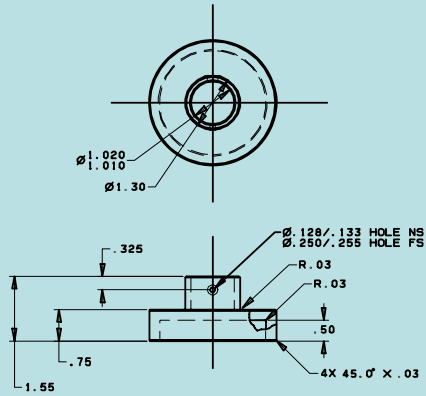
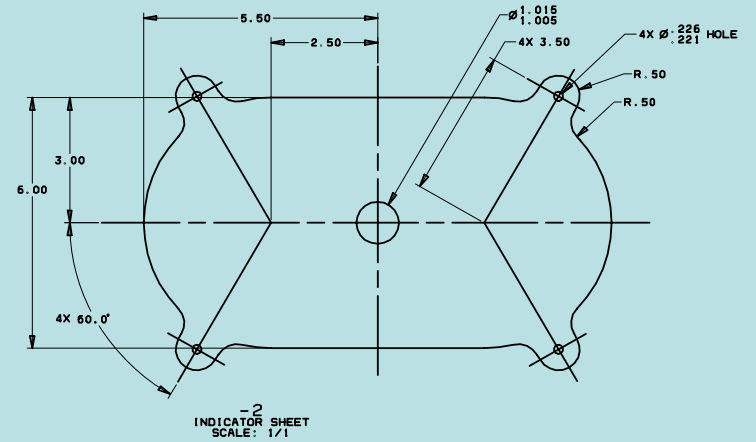
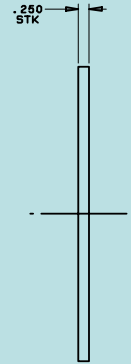
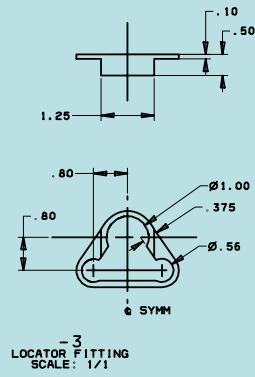
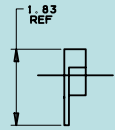
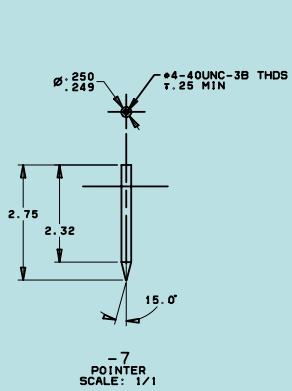
-1 ASSY
SCALE: 1/1

**INSULATION BLANKET BURNER
ADJUSTMENT TOOLS
IGNITOR CLOCKING AND
POSITIONING TOOL**

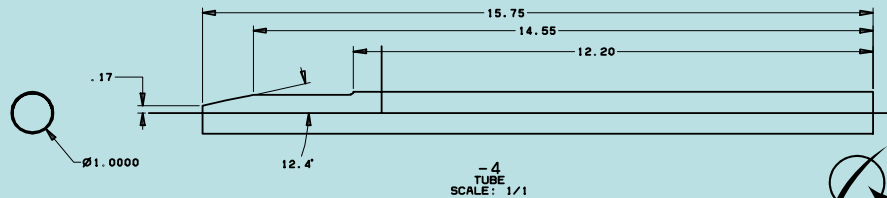
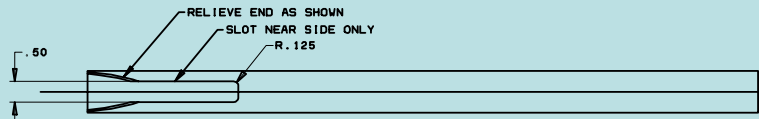
Sheet 1 of 2
scale: none

-	4	ø10	WASHER	-	-	-	-	-			
-	2	ø10-32	SELF LOCKING NUT	-	-	-	-	-			
-	2	ø10-32	SOCKET HD CAP SCREW	-	1.0 LONG	-	-	-			
-	1	ø4-40UNC	PHILLIPS HD SCREW	-	.375 LONG	-	-	-			
-	-	-	-	-	-	-	-	-			
-	2	-8	LEVELOR CAM	-	250 X 1.1 X 2.0 ANY ALUMINUM	-	-	-			
-	1	-7	POINTER	-	ø .25 X 2.8 ANY STEEL	-	-	-			
-	1	-6	KNOB	-	ø 3.0 X 1.6 ANY ALUMINUM	-	-	-			
-	1	-5	TUBE END	-	ø 1.0 X 1.5 ANY ALUMINUM	-	-	-			
-	1	-4	TUBE	-	ø 1.0 X .035 WALL X 15.8 ANY ALUMINUM	-	-	-			
-	1	-3	LOCATOR FITTING	-	50 X 2.0 X 2.5 ANY ALUMINUM PLATE	-	-	-			
-	1	-2	INDICATOR SHEET	C6	250 X 7.5 X 11.2 ANY PLEXIGLASS SHEET	-	-	-			
-	-	-1	IGNITOR LOCATOR	A4	-	-	-	-			
REV	DES	APP	DATE	DESCRIPTION	MATERIAL AND SPECIFICATION	HT	TR	FINISH	PT	PK	LEN
-	-	-	-	IDENTIFYING NUMBER	PARIS LIST	-	-	-	-	-	-





-6
KNOB
SCALE: 1/1



INSULATION BLANKET BURNER ADJUSTMENT TOOLS IGNITOR CLOCKING AND POSITIONING TOOL

Sheet 2 of 2
scale: none





For questions about tool fabrication:

Noel L. Spurlock, BSME

Test Engineer - Hazardous Test Facility

Aero / Noise / Propulsion Laboratory

Boeing Commercial Airplanes

Seattle, Washington

noel.l.spurlock@boeing.com