

MAR 02 1988

**Subject:** POWERPLANT INSTALLATION AND  
PROPULSION SYSTEM COMPONENT FIRE  
PROTECTION TEST METHODS, STANDARDS,  
AND CRITERIA.

**Date:**

**Initiated by:**

ANM-110

**AC No:** 20-135

**Change:**

1. **PURPOSE.** This advisory circular (AC) provides guidance for use in demonstrating compliance with the powerplant fire protection requirements of the Federal Aviation Regulations (FAR). Included in this document are methods for fire testing of materials and components used in the powerplant fire zone areas of aircraft, as well as the rationale for these methods.
2. **RELATED FAR SECTIONS.** The applicable FAR sections are listed in Appendix 1 of this AC.
3. **BACKGROUND.** Although § 1.1 of Part 1 of the FAR provides general definitions for the terms "fireproof" and "fire resistant," these definitions do not specify heat intensity, temperature levels, duration (exposure time), or an appropriate wall thickness or other dimensional characteristics for the purpose intended. With the advent of surface coatings (i.e., ablative/intumescent), composites and/or metal honeycomb for acoustically treated ducting, cowlings and other components which may form a part of the nacelle firewall, applicant confusion sometimes exists as to how compliance can be shown, particularly with respect to the definition of "fireproof" as defined in § 1.1.
4. **DEFINITIONS.** For the purposes of this AC, the following definitions apply:
  - a. **Fireproof:** A material which will withstand heat as well as or better than steel and which will withstand a 2000°F (+ 150°F) flame for 15 minutes minimum, while still fulfilling its design purpose. When applied to materials and parts used to confine fires within designated fire zones, "fireproof" means that the material or part will perform this function under the most severe conditions of fire, and duration of fire, likely to occur in such zones. Example: Nacelle firewall, which will withstand a 2000°F flame for 15 minutes.
  - b. **Fire Resistant:** When applied to powerplant installations such as fluid-carrying lines, other flammable fluid system components, wiring, air ducts, fittings and powerplant controls; fire resistant refers to the item which will perform the intended functions under the heat and other conditions likely to occur at the particular location and will withstand a 2000°F (+ 150°F) flame for 5 minutes minimum. Example: A fire resistant hose which will withstand a 2000°F flame for 5 minutes.

c. Flame Resistant: Materials which will not support combustion to the point of propagating a flame beyond safe limits after removal of the ignition source.

d. Flash Resistant: Materials which will not burn violently when ignited.

e. Engine Combustion Case Burnthrough: The condition in which a hole is burned through the engine case, allowing a high pressure and high temperature gas stream to escape from the engine.

f. Heat Flux Density: The rate of thermal energy in Btu/ft<sup>2</sup>-sec transferred to the test specimen during the fire test.

## 5. FIRE PROTECTION PRINCIPLES AND OBJECTIVES.

a. The primary objective of fireproof and fire resistant materials and components is to contain and isolate a fire and prevent other sources of fuel and/or oxygen from feeding the existing fire, and to ensure that components of the engine control system will function effectively to permit a safe shutdown of the engine.

b. To demonstrate satisfactory containment capability, the materials or components must have adequate strength for the foreseen flight and operating loads, under the heat conditions of a fuel or oil fire, for a reasonable time duration to allow flightcrew recognition and subsequent corrective action and to provide proper fire detection and fire extinguishment.

c. Fire testing should accurately simulate, as near as practicable, the likely fire environment to prove the materials and components will provide the necessary fire containment to meet the above objectives when exposed to a fire situation in service.

d. The descriptors "fireproof" and "fire resistant" differ only in the time duration that the material or component should maintain its integrity or perform its function. Fire resistant means the material or component will function and maintain its integrity for a minimum of 5 minutes when exposed to a 2000°F flame temperature. Fireproof means the material or component will maintain its integrity and function for a minimum of 15 minutes when exposed to a 2000°F flame temperature.

## 6. FIRE TEST EQUIPMENT STANDARDS AND TEST CRITERIA. Fire tests should meet and produce the following conditions and environment:

### a. Test Equipment Criteria.

(1) Specified flame impingement temperature, heat flux density, and flame distribution.

(2) Critical actual operating loads and environmental conditions (air and fluid flow rates, pressures, structural loads, and the like).

(3) Specified fire and heat flux exposure duration.

b. Burner Equipment: Heat flux density and temperature capability.

(1) The basic torch or burner requirements are that the flame should produce a 2000°F temperature within 1/4 inch of the specimen and engulf or provide representative impingement coverage, dependent on specimen size. The burner or torch should provide a heat flux density of between 9.0 and 11.8 Btu/ft<sup>2</sup>-sec, except for application to small components/firewall penetrations.

c. Acceptable Burner/Torch Configuration. Depending on the specific application, the following burners have been used:

(1) The type specified in Powerplant Engineering Report No. 3A (see Appendix 2, Nos. 1, 5, and 6). This burner has been used to test flammable fluid carrying components, cowling, composite materials, firewall materials, fuel and hydraulic hoses, and other similar applications.

(2) SAE 400 Burner (standard). This burner has been used for testing fire detectors, associated electrical wiring, and similar applications and is specified in various Technical Standard Orders (TSOs) and military standards.

(3) SAE 401 Burner adjusted to increase the output to approximately 9.5 Btu/ft<sup>2</sup>-sec heat flux density. This adjusted burner has been used to test electrical wiring, fuel flowmeters, firewall fittings, and other components.

(4) Propane and Oxy-Acetylene Torch-standard and diverging nozzles. The propane or oxy-acetylene burner has been used for wiring, flow meters, firewall penetrations, and other "small" component type applications.

(5) Miscellaneous burner configurations acceptable to the FAA for the intended demonstration and applications. Basically, the component and material fire testing has been accomplished using the manufacturer's choice of burner, provided acceptability by the FAA has been determined with respect to flame size/impingement area and heat flux density, and the temperature at the test article is 2000°F. The adequacy of the burner depends on the size of the component, installation considerations, and on the flame completely engulfing the exposed portion or "face" of the component or covering a representative portion of sheet material.

d. Acceptable Test Criteria and Philosophy.

(1) The test for demonstrating compliance with the criteria for "fireproof" materials, components, and fittings is to expose the specimen to 2000°F temperature. The specimen should withstand flame penetration and not exhibit backside ignition for at least 15 minutes. Sheet materials and panels shall be tested by exposing a sample size of a minimum 10 inches on a side (10 x 10) to a flame from a suitable burner at the test operating conditions outlined in paragraph 7. The flame size and temperatures shall be sufficient to maintain the required test temperature over a minimum area of at least 5 x 5 inches.

(2) Fittings used in firewalls and in fire zones shall be completely enveloped in the flame on the side that would normally be exposed to fire in the fire zone. The fittings shall be mounted in a manner simulating the actual installation, and fluid lines or tubing may be connected to both ends of the fitting to simulate the installation that would be present during a typical fire event. However, for fluid fitting tests, there should be no fluid in the line on the engine side of the fitting in the fire zone since the fire may have been caused by a failure of the line to the fitting under evaluation. Likewise, if failure of the line on the engine side of the firewall could drain the fluid from that portion of the line upstream of the firewall, up to the fluid shutoff valve, then the lines connected to both sides of the fitting should not contain fluid for this testing. If the fitting is part of the shutoff valve, then the line behind or upstream of the valve should contain fluid. For operational components, such as check valves, lines, etc., the flame should completely envelop the unit.

(3) Technical Standard Order, TSO-C53a, Fuel and Engine Oil System Hose Assemblies, specifies hose assembly fire resistance requirements. These hose assemblies should be exposed to a 2000°F flame for 5 minutes while maintaining the fuel or oil at critical (minimum or maximum) operating flow rates and pressures without evidence of any leakage. The 5-minute exposure provides a reasonable time for the flightcrew to recognize a fire condition, shut down the appropriate engine, and close the fire fuel shutoff valve(s), thus shutting off a source of fuel to the engine compartment. It is important to evaluate the particular installation and obtain the minimum flow rate over the entire operating envelope. Although the TSO specifies a flow rate in gallons per minute of 3 to 5 times the  $(ID)^2$ , experience has shown, for example, that a hydraulic system drain or return line not under system demand can have no flow or a flow quite a bit less than that specified by 3 times  $(ID)^2$ . The lower flow rate should then be used for the fire resistance or fireproof testing. The fire test procedure for hoses is outlined in FAA Powerplant Engineering Report No. 3A, Standard Fire Test Apparatus and Procedure (see Appendix 2, Nos. 1, 5, and 6).

(4) The operational criteria required for various components depends on the kind of component to be tested. For example, if the unit is an oil line routed through a fire zone with the shutoff valve located outside and downstream of the fire zone, the line should withstand leakage or failure for 15 minutes. If the unit under test is a shutoff valve located in the engine compartment fire zone, the valve should be exposed to the burner or flame for 5 minutes. The valve should not leak and should be able to be closed by normal application means at the end of the 5-minute exposure. After the valve has been closed, it is to be exposed to the flame for an additional 10 minutes. The valve should not leak or show evidence of failure. Operational components should be subjected to the fire tests in every installation unless similarity to previously approved configurations can be shown, or they are made of steel or copper based alloys, or they are of such construction that their capability to operate satisfactorily under fire conditions is obvious.

(5) Electrical and mechanical controls for components such as shutoff valves located in the engine compartment or other designated fire zones are required to be "fire resistant." These shall be tested at a 2000°F temperature for 5 minutes. At the end of 5 minutes, the control shall perform its intended function without failure or malfunction. The flame should completely envelop the control and the end fittings and connections from one direction, all as a unit. Where control rods or cables are to be tested, a typical section is all that is required to be evaluated. About 8 inches of the typical section will suffice in most tests, including the end connections and fittings. For testing cable controls, the normal rigging load should be simulated. Control rods which act in compression to operate their component should have the flame applied over the center portion of the rod length where the column compression action will most likely cause failure of the material. Flammable fluid shutoff valve controls should be tested for fire resistance in each installation, except where the cables or rods are purely tension controls and constructed of steel or other materials shown to be "fire resistant" or are designed such that their operation in fire conditions is obvious.

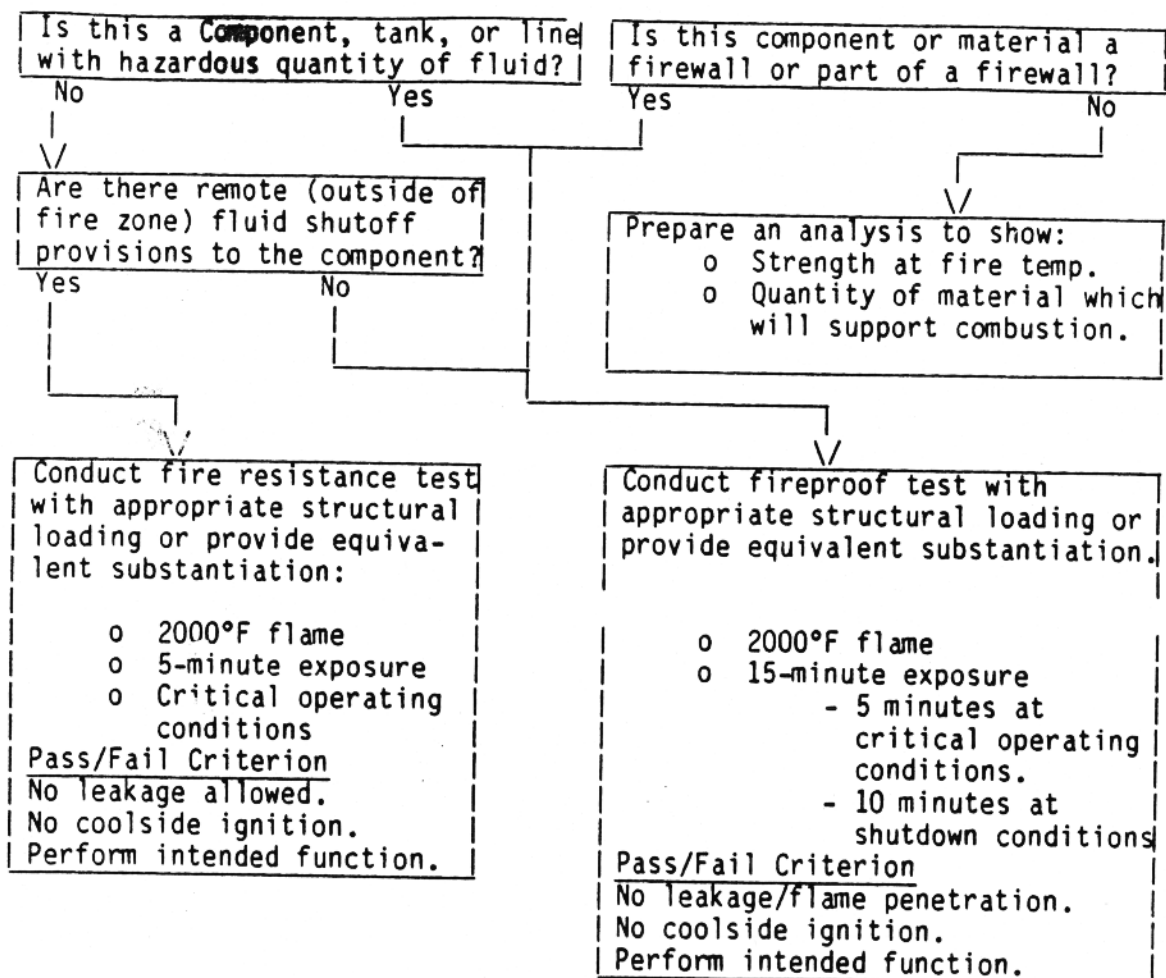
(6) The following minimum thickness materials are considered acceptable for use in firewalls or shrouds for nonstructural/nonload-carrying applications, without being subjected to additional fire tests:

- (i) Stainless steel sheet, .015 inch thick.
- (ii) Mild steel sheet protected against corrosion, .018 inch thick.
- (iii) Titanium sheet, .016 inch thick.
- (iv) Monel metal sheet, .018 inch thick.
- (v) Steel or copper base alloy firewall fittings/fasteners.

NOTE: Distortion of thin sheet materials and the subsequent gapping at joints or between rivets is difficult to predict; therefore, testing of the simulated installation is necessary to prove the integrity of the design. Typically, rivet pitches of 2 inches or less on non-load-carrying titanium firewalls of .020 inch or steel firewalls of .018 inch are acceptable without further testing.

(7) The chart shown in Figure 1. provides a general guideline for assessing the testing necessary. However, in every application the applicant should coordinate the fire test verification plan and other certification testing for the fireproof and fire resistant aspects of the proposed installation with the FAA office responsible for the project.

Figure 1. Guide to Identifying Fire Protection Certification Requirements for Components and Materials in Propulsion Designated Fire Zones



NOTE: "Component" includes controls, tubing, fittings, shutoff valves, fire extinguishing lines, flexible hoses, etc., as applicable.

## 7. FIRE PROTECTION INSTALLATION AND DESIGN FEATURES.

a. Structural Operating Environment. The structural static and dynamic loading to be simulated during the testing are a function of the component or material and the intended use and location, and should be addressed in the test plan. Firewall or component structural loading conditions must be identified and incorporated in the fire test setup. Flexible hoses are fire tested at anticipated fuel or oil internal pressures, flow rates, and vibratory conditions. The test is intended to simulate aircraft powerplant fire conditions, with the fuel, oil flow, and pressures at critical operating conditions.

b. Design and Application Factors. There are a number of other important factors which can influence the test conditions required to substantiate firewalls. These considerations are classified into two



categories. One is the "intended use" of the firewall. For example, is its intended use a cowl door or the inner wall of an engine fan exhaust duct or an inlet duct, or an isolating diaphragm with its primary purpose being a firewall? The second category relates to the firewall construction. Is it a complex composite structure bonded with resin and coated with a fire retardant, or is it an acoustic panel, or simply a stainless steel, titanium, or other basic metallic configuration? Typically, panels representative of the proposed structure (approximately 1-1/2 by 2 feet), have been acceptable for demonstrating fire protection capability.

(1) "Intended Use" Test Criteria.

(i) If the firewall is a diaphragm or simple separation type nonload-carrying bulkhead in a nacelle area with low air flow ventilation and circulation, and a small pressure load; a simple fire test at ambient environmental laboratory conditions is acceptable to demonstrate fireproof properties.

(ii) If the firewall is the nacelle cowling with approximately 1/2 psi or less nacelle pressurization, scrubbing airflow may be utilized without consideration for having to run the test with nacelle pressurization.

(iii) If the firewall is an engine fan air exit duct or inlet adapter, "cool side" (backside) pressure and airflow conditions should be properly simulated during the testing. The test should be performed with the airflow and pressure the duct will normally be exposed to during critical power operating conditions for the initial 5 minutes and at windmilling conditions for the additional 10 minutes of the fire test if this is the most severe heat condition. Fan exhaust ducts normally have their critical differential pressures existing across the duct at sea level, takeoff conditions. Inlet adapter type ducting will usually be at the maximum pressure when the engine is shut down in flight and allowed to windmill. These operating conditions should be determined by the applicant for use in the fire test. Typically, unprotected acoustic honeycomb specimens which fail this test rupture due to loss of strength under pressure during the first few minutes of testing.

(iv) Aircraft engines with turbochargers operate at elevated temperatures and pressures within the engine compartment. Components adjacent to the turbocharger and exhaust systems should be evaluated for operation at these elevated temperatures and pressures. Also, any flammable fluid-carrying component or other system should be evaluated for a possible exhaust system component failure with resultant exhaust gas leakage. When those turbochargers are used for cabin pressurization, all air inlet ducts within the engine compartment should be evaluated for component burnthrough or release of noxious fumes within the cabin ventilation system.

(2) Firewall Construction Test Considerations. Bonded construction firewalls (composites or bonded metal matrix), in addition to being pressurized during testing, may need to be vibrated. This should be accomplished for all specimens with a sprayed or painted-on

protective coating intended to insulate the base material from the fire conditions. Past tests have shown some ablative and intumescent coatings become extremely brittle when exposed to flames. Vibration can cause the coating to flake off, exposing the base material. Current experience has not supported the use of an intumescent coating as an acceptable fire protection coating because the coatings have lacked durability and exhibited poor adhesion characteristics in service. For composites or other "new" materials, more than one test panel may be required to show repeatability of the configuration.

c. Outgassing. A characteristic of bonded construction firewall materials and seal materials is the outgassing of the volatile constituents of the bonding resins or seal materials. This can occur from either the hot or cool side surface of the specimens during the test. These gasses are, in most instances, highly flammable. Ignition occurring on the cool side is unacceptable in passing the fire test. Where the cool side surface is exposed, visual observations will suffice to note if ignition has occurred. However, if the specimen is subjected to pressure loading during the test, or the cool side is hidden from view, then other methods to detect the ignition should be defined. It should be noted that some acoustically treated ducts are of metal construction, and the face sheets are bonded to the honeycomb core with resins which can exhibit outgassing. For these types of construction, no "cool side" ignition is allowed and verification is required. CAUTION: Specimen size should be large enough to prevent flame wraparound of the specimen edge if the application would prevent flame wraparound. This is for providing a more accurate simulation of the actual installation which provides acceptable test results.

(1) Upon initial application of the test torch flame, minor flareup or flashing at the flame impingement area may occur; however, continuous burning or a significant increase of the flame pattern over the entire specimen is unacceptable. Ignition of the backside as well as penetration are the other anomalies which are cause to reject the component. Excessive outgassing, especially from composite construction, should be investigated to ensure the smoke will not ignite. Additional testing of samples should be requested to ensure that:

(i) Any surface flareup is self extinguishing and does not burn after removal of the test flame and,

(ii) Self re-ignition of the material does not occur when the flame is removed.

(2) If the gases emitted during the fire tests can enter the personnel compartment, the gases must be evaluated for their toxicity, volatility, and possible impairment of the crew or passengers.

d. Unique Design Testing Considerations.

(1) The applicant should evaluate firewall designs putting special emphasis on fuel and oil lines, cowlings and/or bleed duct, and other firewall penetration points to determine the need for a specific fire test setup and incorporation of the penetrations in the firewall

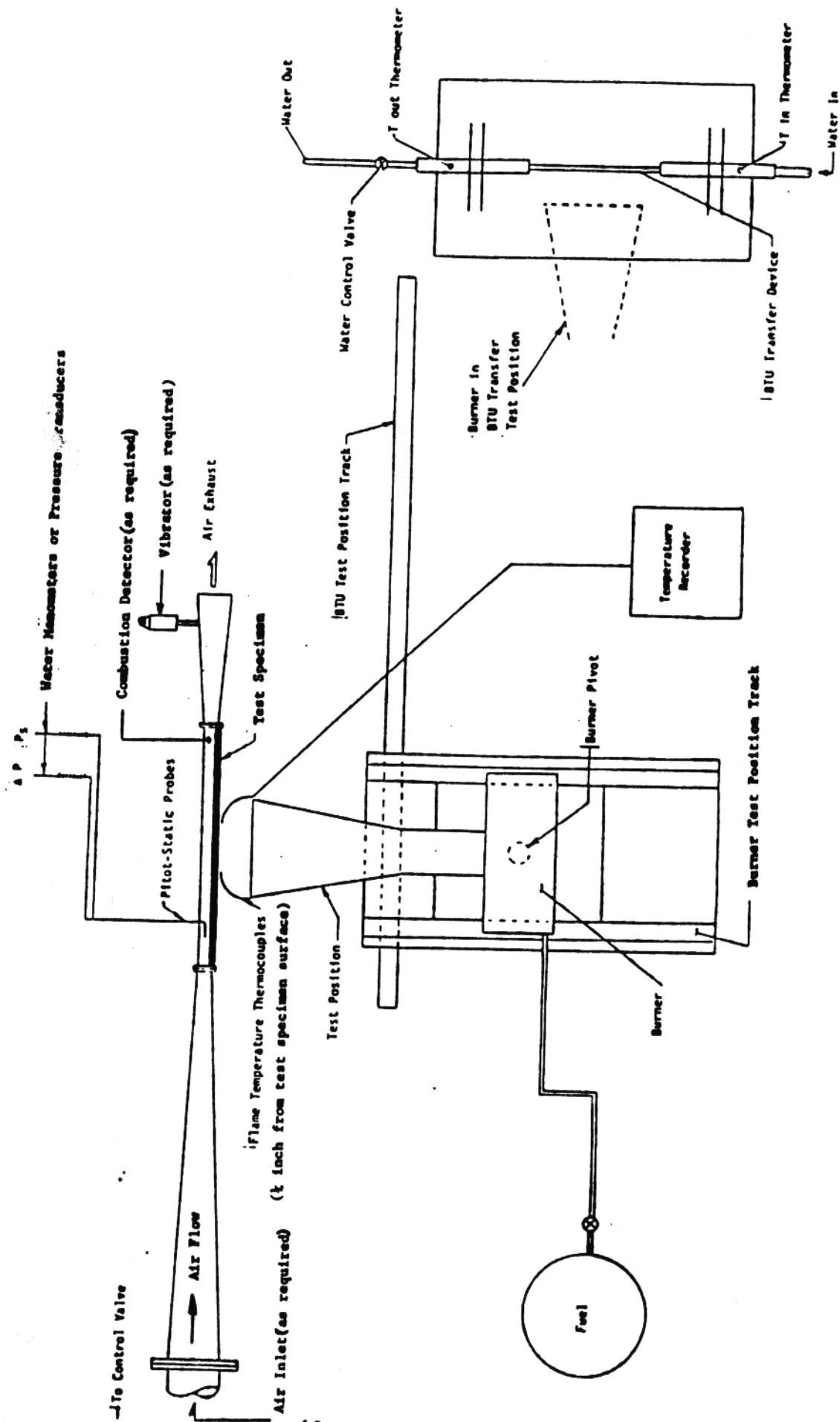


test specimen. As noted in paragraph 6d(2), flammable fluid-carrying lines and fittings need careful consideration. The use of previously approved corrosion-resistant steel or equivalent material is considered satisfactory without further tests. Use of aluminum alloy for any size line/fitting on either side of a firewall should be avoided. An evaluation of the specific installation configuration and actual minimum flow rates should be accomplished to determine fire resistant or fireproof capability. Previous tests (Appendix 1, No. 3) have shown aluminum couplings (3/4 inch or larger) have leaked after exposure to the test flame for 5 minutes with nominal 30 psi pressure and a fluid flow equal to 5 times (ID)<sup>2</sup>. All sizes of aluminum fittings up to 2 inches failed the "no flow" conditions. Five minutes is acceptable for fire resistant tubing; however, all firewall fittings/penetrations are required to maintain the integrity of the firewall without flame penetration or leakage for 15 minutes. Other designs which require special considerations are butt-joint seals between firewall diaphragms, cowl doors and where the cowl door is part of the firewall, the door seals and/or seals between the doors and drain, and vent masts interfacing with the doors. Special fire tests of these "kiss" seals will be necessary to ensure the capability of the overall firewall. When dedicated protection devices or specific procedures or techniques are required to provide fire protection for an installation, development of periodic maintenance and/or requirements for inspection of these devices or techniques is required so that continued airworthiness is assured.

(2) For engine cowlings and nacelles of small airplanes and helicopters, the fire resistant requirements of §§ 23.1193(c) and 27.1193(d) have been interpreted to allow use of any material shown to be equivalent to aluminum alloy. Cowlings are subject to airflow over one or both sides which greatly improves the fire resistant capability of the aluminum and has been found to be acceptable. For example, a .04-inch aluminum panel with an 80 Kt minimum scrubbing airflow over the backside has been shown to maintain its integrity when subjected to a 2000°F torch for 15 minutes.

e. Special Test Consideration. In tests, particularly where testing is conducted using a burner other than one specified in Power Plant Engineering Report No. 3, anomalies may be encountered due to torch blast effects and local hot spots created due to nonuniform heating of the specimens. These anomalies may be overcome with carefully designed burner tube extensions which spread the flame over a larger surface, as described in the report. An example of a fire test setup is shown in Figure 2. This setup is intended to illustrate the necessary equipment for fire testing. For some tests, the requirement may be less; however, for all testing, the applicant should coordinate the test requirements with the FAA office responsible for the project, submit a detailed calibration and test plan, and verify that all of the needed testing conditions have been covered for the installation to be evaluated.

Figure 2. Typical Fire Test Setup



8. ENGINE CASE BURNTHROUGH CRITERIA (§§ 23.903 and 25.903). The above discussion on fireproof materials and the test methods and criteria are not appropriate for demonstrating the requirement for minimizing the hazard from engine case burnthrough situations.

a. If the installation design provides a burnthrough barrier for deflecting an engine combustion chamber burnthrough and a fire detector installation to provide quick detection of the event, an evaluation is necessary to show that proposed protection is adequate. Although combustion chamber design has continually improved, service experience has identified that turbine engine case burnthroughs have and continue to occur. Burnthroughs have also been caused by other types of failures such as fuel nozzle malfunctions, turbine vane burnout, and combustion chamber cracking, for example.

b. Normally, the area of concern is the projection between the forward and aft combustion flange of the engine case, including a 15° cone from the engine flange. This is the section of the engine where the hot, high pressure gas stream from a burnthrough may emerge in the direction of the pylon. The temperatures (approximately 3000 - 3500°F) and gas pressures (approximately 350 psi) are considerably higher than the criteria and melting point of the materials used in firewall construction; therefore, conventional firewalls will generally fail in a very localized area and can expose the pylon, fuselage, and/or wing to a hazardous situation which could go undetected for a considerable length of time. Experience and tests have shown that for a radial distance of 10 burnthrough hole diameters from the engine case surface or burnthrough "hole," the temperatures and pressures do not significantly decay. However, effects of discrete installation considerations (such as fan airflow) should be individually addressed with respect to the "applied" characteristics of the burnthrough gas stream.

c. The test setup and torch configuration required to verify burnthrough protection is a torch with a 1-inch diameter orifice or nozzle, having a torch pressure approximately the same as the maximum burner pressure of the engine to be installed. The test article (the burnthrough barrier) should be located at the same distance and supported the same as on the proposed installation. The engine burnthrough criterion requires that under these operating conditions the barrier will maintain its integrity for a minimum of 3 minutes when exposed to a 3000-3500°F flame temperature.

d. The proposed certification test plan, including the above operating environment, should be submitted to the FAA office responsible for the project for coordination and acceptance prior to conducting the fire testing.

## APPENDIX 1. RELATED FAR SECTIONS

The sections listed below identify requirements that will necessitate the use of fire testing methods and standards outlined in this AC to show compliance with the applicable powerplant and APU regulations in FAR Parts 1, 23, 25, 27, 29 and 33.

<u>FAR PART</u>	<u>SECTION</u>
1	1.1
23	23.859, 23.863, 23.903, 23.1013 23.1091, 23.1121, 23.1123, 23.1141, 23.1182, 23.1183, 23.1189, 23.1191, 23.1192, and 23.1193.
25	25.859, 25.863, 25.865, 25.867, 25.903, 25.1013, 25.1091, 25.1103, 25.1121, 25.1123, 25.1165, 25.1181, 25.1182, 25.1183, 25.1189, 25.1191, 25.1192, 25.1193, 25.1201, 25.1203, and 25.1207.
27	27.859, 27.861, 27.863, 27.903, 27.1123, 27.1183, 27.1185, 27.1189, 27.1191, 27.1193, 27.1194, and 27.1195.
29	29.859, 29.861, 29.863, 29.903, 29.1025, 29.1103, 29.1121, 29.1123, 29.1165, 29.1183, 29.1191, 29.1193, 29.1194, 29.1201, and 29.1203.
33	33.17, 33.71, and 33.1189.

## APPENDIX 2. RELATED READING MATERIAL

1. **Federal Aviation Administration:** Powerplant Engineering Report No. 3A, Standard Fire Test Apparatus and Procedure, Revised March 1978.
2. Federal Aviation Administration: Report No. FAA-RD-76-213, Re-evaluation of Burner Characteristics for Fire Resistance Tests, dated January 1977.
3. Federal Aviation Administration: Report No. DS-67-4, A Study of the Fire Resistance of Aluminum Alloy Tubing and Fittings, April 1967.
4. Department of Commerce, Civil Aeronautics Administration, Safety Regulation Release No. 259, Compliance of Equipment and Materials Used in Air Carrier Aircraft with Fire Prevention Requirements, August 26, 1947.
5. Society of Automotive Engineers: AS 1055B, Fire Testing of Flexible Hose, Tube Assemblies, Coils, Fittings and Similar System Components, Revised March 1, 1978.
6. Society of Automotive Engineers: AIR 1377A, Fire Test Equipment for Flexible Hose and Tube Assemblies, Revised January 1980.
7. Aerospace Industries Association: Design Manual on Aircraft Fire Protection for Reciprocating and Gas Turbine Engine Installations, No Report Number or Date (usually known as the "Red" Book).
8. FAA Technical Standard Order, TSO-C42, Propeller Feathering Hose Assemblies.
9. FAA Technical Standard Order, TSO-C53a, Fuel and Engine Oil System Hose Assemblies.
10. FAA Technical Standard Order, TSO-C75, Hydraulic Hose Assemblies.